

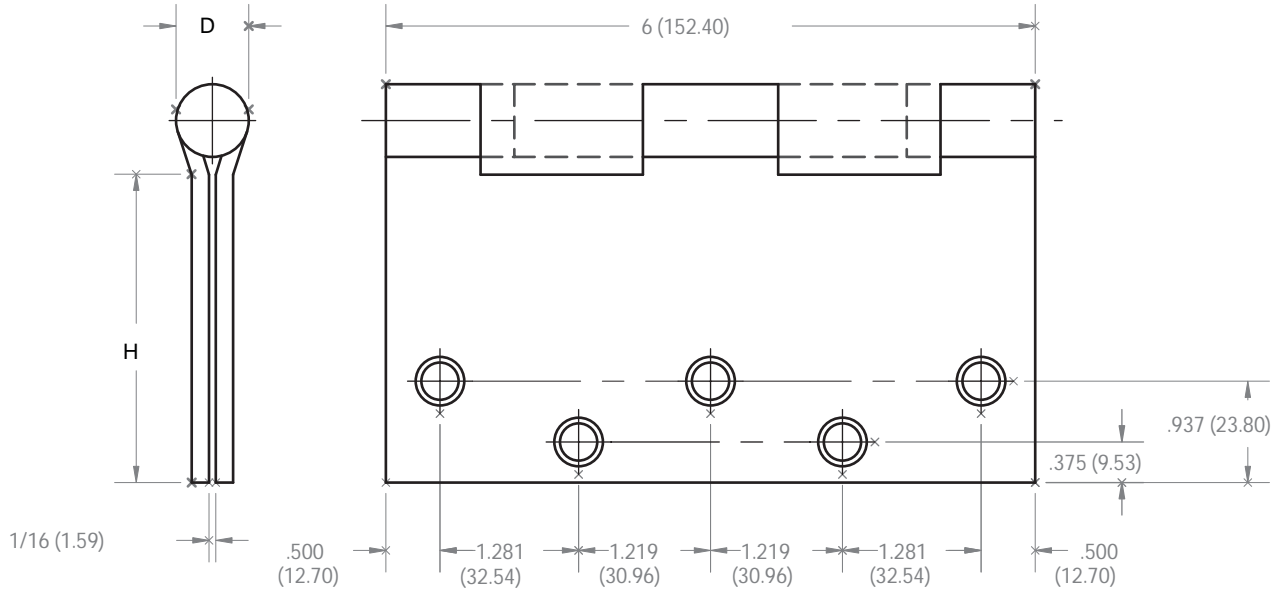
# FULL MORTISE HINGE TEMPLATE

## 4-BALL BEARING HEAVY DUTY

SIZES: 6 x 4-1/2 (152.40 x 114.30)

6 x 5 (152.40 x 127.00)

6 x 6 (152.40 x 152.40)



-DO NOT SCALE-

| PART#  | SIZE OPEN                    | MATERIAL        | GAUGE      | "H"<br>DISTANCE FROM EDGE OF<br>LEAF TO SWAGE LINE | "D"<br>KNUCKLE DIAMETER | NUMBER<br>OF HOLES | MACHINE<br>SCREW SIZE | WOOD<br>SCREW SIZE |
|--------|------------------------------|-----------------|------------|--|-------------------------|--------------------|-----------------------|--------------------|
| BB6450 | 6 X 4.5<br>(152.40 x 114.30) | Stainless Steel | .190 (4.8) | 1 3/4" (44.45)                                     | 11/16" (17.50)          | 10                 | 1/2 X 1/4-20          | 1-1/2 X 14         |
|        |                              | Steel & Brass   | .203 (5.2) | 1-11/16" (42.86)                                   | 3/4" (19.05)            |                    |                       |                    |
| BB6500 | 6 X 5<br>(152.40 x 127.00)   | Stainless Steel | .190 (4.8) | 2" (50.80)   | 11/16" (17.50)          | 10                 | 1/2 X 1/4-20          | 1-1/2 X 14         |
|        |                              | Steel & Brass   | .203 (5.2) | 1-15/16" (19.20)                                   | 3/4" (19.05)            |                    |                       |                    |
| BB6600 | 6 X 6<br>(152.40 x 152.40)   | Stainless Steel | .190 (4.8) | 2-1/2" (63.50)                                     | 11/16" (17.50)          | 10                 | 1/2 X 1/4-20          | 1-1/2 X 14         |
|        |                              | Steel & Brass   | .203 (5.2) | 2-7/16" (61.91)                                    | 3/4" (19.05)            |                    |                       |                    |

INNER BOX QTY 3 EACH  
PCS/CASE 24 EACH



6605 Flotilla St.  
City of Commerce  
CA 90040 USA  
Tel: (323) 888-6601  
FAX: (323) 888-6699  
Website: cal-royal.com  
Email: sales@cal-royal.com

ITEM NO.:

BB6450  
BB6500  
BB6600

DESCRIPTION:

FULL MORTISE HINGE TEMPLATE  
FOUR-BALL BEARING, HEAVY DUTY

SCALE:

NOT TO SCALE

UNIT:

inches (mm)

ANSI:

A156.7

VERSION:

v.1 rev. 0315

BY:

adg